

# Make It Personal

by Jennifer Gigas



One of the joys of home embroidery is adding a personal touch to all of our projects. Whether we are creating labels, stitching a child's name on his or her blanket or monogramming linens, we can never have too many lettering styles from which to choose. BERNINA® Embroidery Software expands your lettering options with 50 preprogrammed alphabets, extensive editing capabilities and automatic digitizing of True Type fonts (Designer Plus level only). Familiarize yourself with the powerful lettering tools in your software and take a look at some unexpected uses for lettering.

## Basic Lettering Options

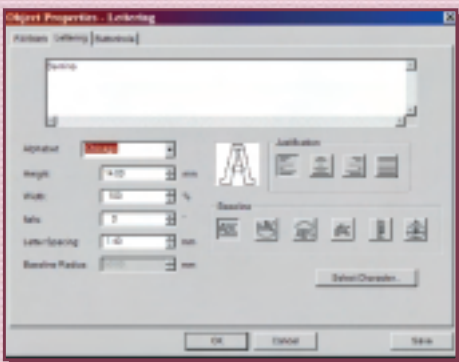
Note: Information on lettering may be found in your owner's guide beginning on page 149.

The simplest way to add lettering to a design file is to select the Lettering Tool from the Design toolbar and type directly on-screen. The lettering objects will be generated with the current lettering Object Properties.



To format your text as it is added to the design file, press "A" on the keyboard.

This will open the Lettering dialog box from which you may select the lettering style, size, spacing and justification desired for your project. Tip: All text typed in the dialog box



becomes one object and will have the same Object Properties. If you wish to have different properties for segments of the lettering, enter that text separately.

## Justification and Baseline Options

Justification refers to the alignment of multiple rows of text typed into the dialog box. Options include alignment to the left, right, center or justified.

Lettering baselines (the line along which the lettering is positioned) may be horizontal, vertical, on a circle or you can create the baseline shape most suited for your particular project. Tip: For multicolored lettering, insert color stops by typing "^" after each letter.



## Adjusting Lettering Stitch Settings

Lettering objects are filled with satin stitches; the fill can be quickly and easily changed to a Step or Fancy fill type. To change the fill, select the lettering and open the Object Properties dialog box. Select the Fill Stitch tab; from the stitch type drop down, choose Fancy or Step. Select the desired fill type.



## Elastic Lettering

Elastic lettering options reshape the silhouette of the text. Elastic options include both curved and straight shaping.



## Reshaping



Individual letters can be reshaped to provide just the right look for the project you are working on. To reshape, select the lettering, select the Reshape tool.

Click on the diamond shaped control point in the center of the letter; click on the letter outline. The boundary control points will appear. You may move, add or delete points to reshape the object. When finished, press Enter to accept the changes.



## Monogram Magic

*Note: Refer to the Owner's manual for additional information.*

Take lettering "outside the box" by adding design elements or mirror merge functions to a basic monogram. Use your newly designed monogram on garments, linens, as your signature label or scattered across yardage to create your own embroidered fabric.

### Select lettering style

- Press the "A" key to open the Lettering Properties dialog box. Select a lettering style from the drop down menu. *Tip: Refer to the Online Manual to preview the entire alphabet and to review recommended minimum and maximum lettering sizes for the selected style.*
- Type the letter of choice into the text box. Click "OK". Click on the design screen to position the lettering. *Tip: Follow the prompts on the status bar at the bottom of the screen.*
- Copy and paste the letter until there are four letters on the screen.



### Mirror Merge

- Select one of the letters; select Mirror Merge Vertical/Horizontal. Move the duplicates around until satisfied with placement. Click to set duplicates.



- Repeat for each of the remaining letters, using a different placement each time.
- Select the artistic view to preview.
- Return to the design window and save work.

### Next steps

- Select favorite design, cut.
- Open a new file. Paste the cut design on screen.
- Arrange>Add Buttonhole. Position a buttonhole in the center of the design. Press ESC to turn off the buttonhole function.
- Select the buttonhole, open Object Properties and select the desired buttonhole style. If the buttonhole overlaps the embroidery, merge to remove overlapping stitches. (*Select the design; select the buttonhole. Arrange>merge buttonhole*)
- Group buttonhole and motif.
- Save motif for future use. *Tip: Use decorative buttonholes along a garment placket, to frame antique buttons on decorator pillows or to create beading trim.*



Experiment with various alphabet styles, mirror merge and wreath layouts for novel monogram options on your next project. Visit [www.bernausa.com](http://www.bernausa.com) to download project instructions featuring embroidered journaling. Go to Sewing Studio > Stitching Memories for directions for making the scrapbook page on the previous page.

Traditional 3-letter monogram. First and middle initials mirror merged vertically to form elegant scrolls.



Lace fill placed behind letter B. Small rosebud removed from embroidery motif and placed on letter for interest.

Reshaped lettering with a color change inserted after each letter.

